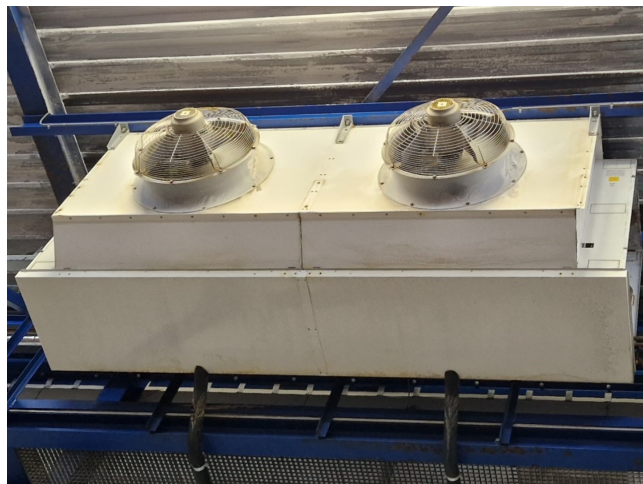


Helpman THOR 728-10/ZH1.5

Specifications

Brand	Helpman
Type	THOR 728-10/ZH1.5
kW	66,7
Refrigerant	Freon
Number of Fans	2
Fin Space in mm	10
Defrosting	Hot Gas
m ³ /h	42.300
Sizes	4100x1400x1300 mm (LxWxH)
Volume	142,0 dm ³
Weight	524 kg
Stock	4



Description

Used Helpman THOR 728-10/ZH1.5

Used Helpman THOR 728-10/zh1.5 evaporator on Freon. Complete with 2 fans - 50 Hz - 2,2 kW - 1420 RPM - diameter 710 mm that have a total airflow of 42.300 m³/h.

*All components of this used evaporator will be tested on good working, leak free condition (electro engines), coils, bearings) Choosing HOSBV means buying with warranty. We perform a industrial cleaning and rust spots will be covered. Also, we can arrange your shipment.

